

BOBBIN BOX

Designed and created especially for Pfaff

By Kim Fillmore

Do you embroider a LOT...and love having my extra bobbins right where you need them...next to the machine. The problem with standard bobbin boxes – they don't hold enough! So...our bobbin box comes to the rescue, and holds much more than just bobbins. Your favorite embroidery scissors, pencils, tweezers...anything that's tall and needs to be kept close by...fits in the cone-shaped pockets on the corners.



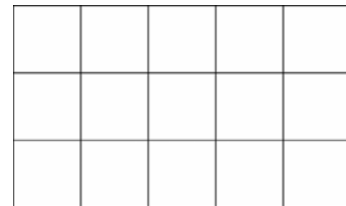
Supplies You'll Need:

- Pfaff creative 2170
- creative Rectangular Hoop (115mm x 120mm hoop)
- Cactus Punch *My Sewing Room 1* collection
- 1 – 18" x 10" solid-color canvas or cotton duck (will be trimmed to final size)
- 1 – 18" x 10" contrasting cotton fabric for lining (will be trimmed to final size)
- 5 – 2 3/4" squares of template plastic for stiffening box
- 1 – 3/4" x 2 3/4" square of template plastic for box flap
- 4 sets of gripper snaps to form the corners of your box
- Rayon embroidery thread
- Sewing thread to coordinate with fabric
- Tear-away stabilizer

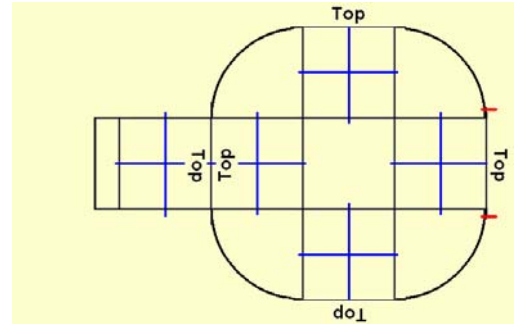


Let's Get Started:

1. Following the diagram, use a fabric marker to draw a grid of 3" squares 5 grids x 3 grids on solid-color canvas/duck fabric.
2. Draw a line 2" from 1 end of large grid – this will result in 1 row of grids being only 1" wide. Round corners of 4 of the squares (see diagram). DO NOT cut away any fabric at this time.

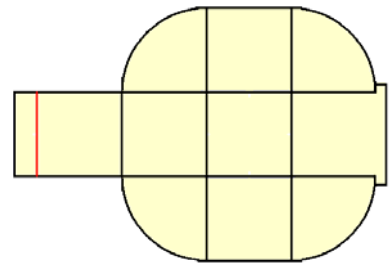


3. Draw intersecting lines through the 5 indicated squares (see diagram).
4. Combine groups of designs to fit in a 2 ½" square space. Send your designs to the memory of your machine.
5. Embroider a group of motifs in the center of the indicated 3" sections. Make sure the top edge of the motifs is positioned in the direction indicated...or you'll end up with upside-down designs! Remove excess stabilizer and press.

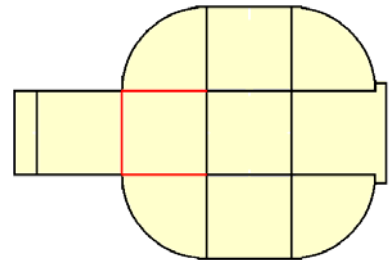


6. Trim ½" away from outline (your piece will look somewhat like a big water-bottle!)! Cut the lining piece to match.
7. With right sides facing, use a ½" seam allowance to stitch around outer edge, leaving an opening for turning (between the marked red lines on the diagram).
8. Use a narrow (2mm x 1.5mm) zigzag stitch to stitch right next to the straight stitching. This will reinforce the outer edges of your box.
9. Turn right side out and press.

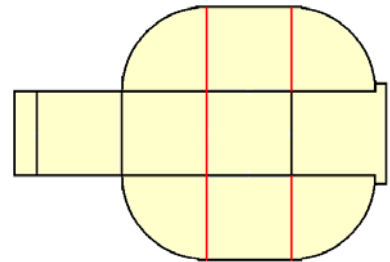
10. Slide the narrow piece of template plastic into the 1" end of the box flap (narrow piece at left of diagram above).
11. Stitch along the line of the 1" flap to secure the template plastic in place.
12. Insert a 2 ¾" plastic square in the remaining section of the box flap.



13. Stitch along red lines (in diagram) to secure plastic in place and stitch sides of next insertion square.
14. Insert a 2 ¾" plastic square in the red-lined section.



15. Stitch along red lines (in diagram) to secure plastic in place and create next insertion squares.
16. Insert a 2 ¾" piece of plastic in the 2 outside squares.



17. Stitch along red lines (in diagram) to secure outer plastic sections in place and create the center bottom insertion square.

18. Insert a 2 $\frac{3}{4}$ " plastic square in the center bottom.
19. Stitch along red lines to create final insertion square.
20. Insert a 2 $\frac{3}{4}$ " plastic square in the final section.
21. Fold opening to inside and topstitch close to the outer edge around the entire box.
22. Attach snaps at points indicated by red "x's" on diagram. Try to get snaps at close to the top/outer edge as possible. Each curved section gets a complete set of snaps (socket and snap) to allow these edges to be snapped together to form the box-shape/cones.
23. Snap cones together to form box.
24. Fill with bobbins and embroider endlessly, knowing you'll always have just what you need at your fingertips!

