



Fat Quarter Bag

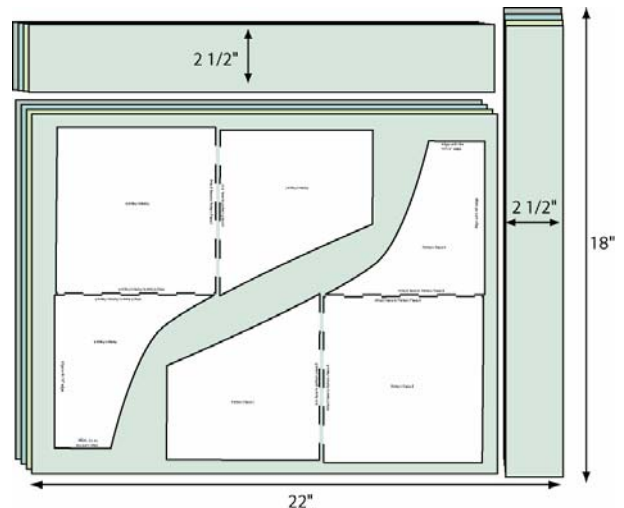
Make this “slouchy” bag to carry whatever is on today’s agenda! It is soft and padded, so it has nice body, and will hold up to whatever you put in it! The embroidery adds a nice touch! The overlaps create two pockets to fill, in addition to the roomy bag.

Sewing Supplies:

Four coordinating Fat Quarters
 1 yard Coordinating Fabric
 1 yard of 45” wide Fusible Fleece
 1/4 inch Right Guide Foot with IDT™ #820541-096
 Adjustable Guide Foot with IDT™ #820677-096
 Bi-level Topstitch Foot with IDT™ #820676-096
 Pfaff 415 Vintage Medallion Design Collection
 40 wt. Rayon Embroidery Thread
 Bobbin Thread
 Sewing Thread
 Fasturn Tube Turner #140000001
 INSPIRA® Tear-A-Way Stabilizer
 360mm x 200mm Elite Hoop #

Cut:

- Stack the first two fat quarters right side up and the second two on top right side down.
- Cut a 2 1/2” strip x 18” strip off the side of your fat quarter as shown.
- Tape the pattern pieces together to create one pattern. Using the pattern, cut out the bag shape from the remainder of the fat quarters.
- Cut the 2 1/2” strip across the remainder of the fat quarters as shown.
- Cut the 2 1/2” x 19 1/2” strips down to 2 1/2” x 18”.
- From coordinating fabric cut four pieces 10” x 14”.
- From coordinating fabric cut one binding strip 3” x width of the fabric.



Sew:

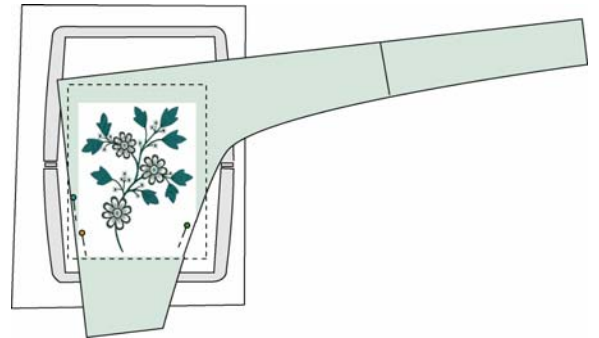
1. Thread with sewing thread top and bobbin.
2. Snap on your 1/4 inch Right Guide Foot with IDT™. Sew the 2 1/2" x 18" strips to their matching pieces cut from the pattern creating one piece.
3. Press the seams open.

Cut Fleece:

1. Using your pieced sections as pattern pieces, place on Fusible Fleece and cut out one piece of fleece for one of each of the fabrics totaling four. The remaining four pieces will be used as lining so they will not be backed with fleece.
2. Cut two pieces of fleece 10" x 14" from remaining fleece for bag bottoms.
3. Fuse the fleece to the wrong side of the fabrics.

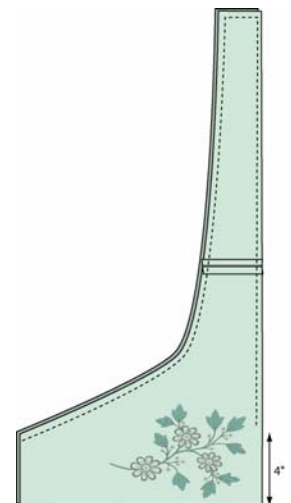
Embroider:

1. Set your creative vision for embroidery. Bring up design 141509 from the Vintage Medallion Collection.
2. Hoop Tear-A-Way Stabilizer in your 260mm x 200mm creative Elite hoop.
3. Print a template of the design and pin it to one of your fabric pieces fused with fleece using the lines to align it in the center of the hoop. Pin the fabric to the stabilizer and remove the paper. Carefully baste the fabric to the stabilizer watching out for the pins. There will be several places where the fabric won't be caught in the basting. After the basting is complete, pin those sections to the stabilizer.
4. Embroider the design. When finished, remove the stabilizer and press.

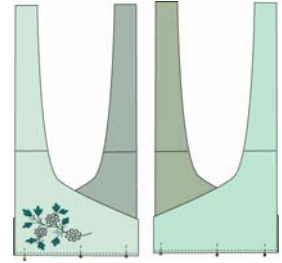


Sew:

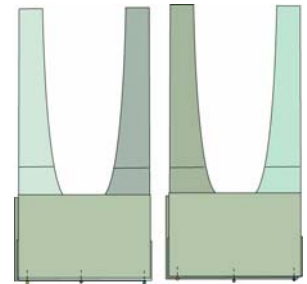
1. Thread with sewing thread top and bobbin.
2. Snap on your 1/4 inch Right Guide Foot with IDT™.
3. Place the embroidered piece right sides together with a lining piece. They will be two different fabrics. Stitch the curved side, across the short end and down the straight side stopping 4" from the bottom.
4. Repeat for the other three un-embroidered pieces.
5. Using your Fasturn Tube Turner, turn all four pieces right side out.
6. Press. Stitch near the raw edge of each piece to secure the edges.



7. Establish your outer pieces. For example, the embroidered piece needs to be the outer piece so the embroidery will show. Overlap and pin the pieces creating a front (the embroidered piece) and a back.

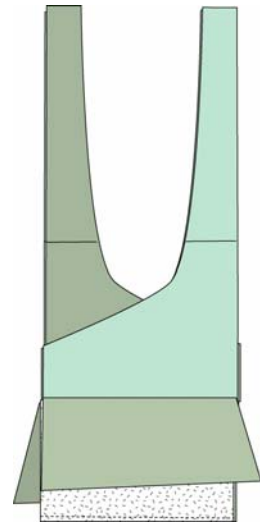


8. On a flat surface, place one 10" x 14" piece with fleece fused to the wrong side, fabric side up. Next place one of the pinned pieces, right side up. Place the un-fused piece (lining) on top face down so your paired outer pieces are sandwiched between the layers as shown.

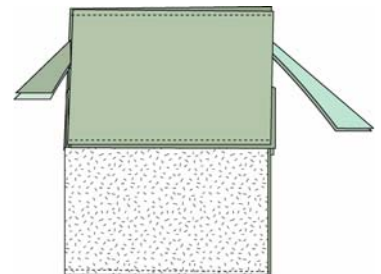


9. Stitch using a 1/4" seam allowance.

10. Open out the bag front and bag back. Place right sides together. Stitch the bottom seam catching the pieces with fleece only. Leave the lining un-sewn.

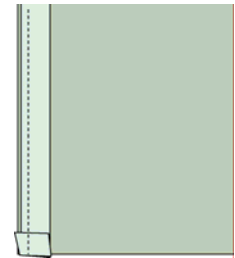
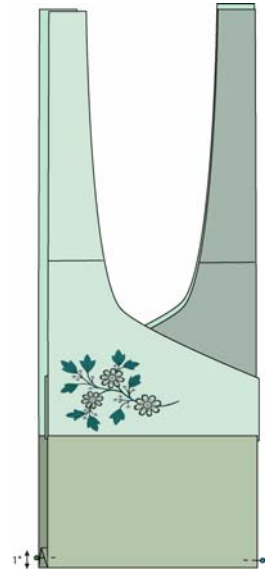


11. Bring the lining around the bag, right sides together and stitch the lining seam making sure your straps are out of the way.



Prepare to Bind the Side Seam:

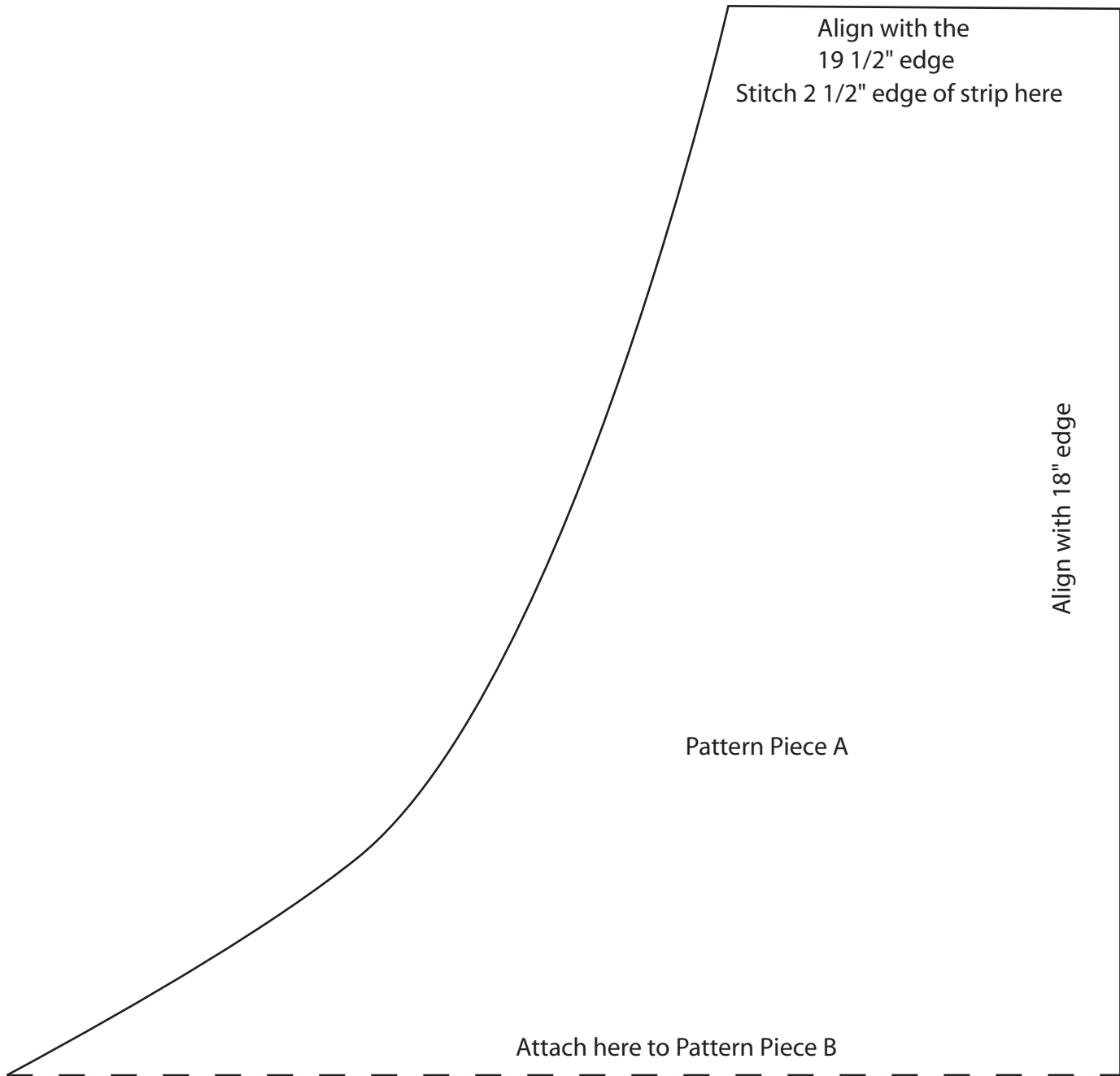
1. Fold the bag wrong sides together. Create a pleat in the bottom by folding up 1" as shown. Pin.
2. Stitch the raw edges of the side seams to secure the edges.
3. Cut the binding strip in half creating two pieces approximately 3" x 22". Fold in half wrong sides together, lengthwise and press.
4. Snap on your Adjustable Guide Foot with IDT™.
5. Fold under the beginning end to finish and place the binding strip on the front of the purse. As you approach the other end, fold under the binding strip and trim the excess fabric. Stitch the binding strip to the purse using a 1/2" seam allowance.
6. Repeat for the other side.
7. Bring the binding strips to the back of the purse and press. Insert 1/4" wide Steam-A-Seam 2 and press to fuse in place.
8. You can either hand stitch the binding in place or snap on your Bi-level Topstitch Foot and topstitch near the edge of the binding.
9. If desired, sew a snap inside the overlap pockets to keep them closed.
10. Tie the ends of the straps in a knot, and you are ready to go!

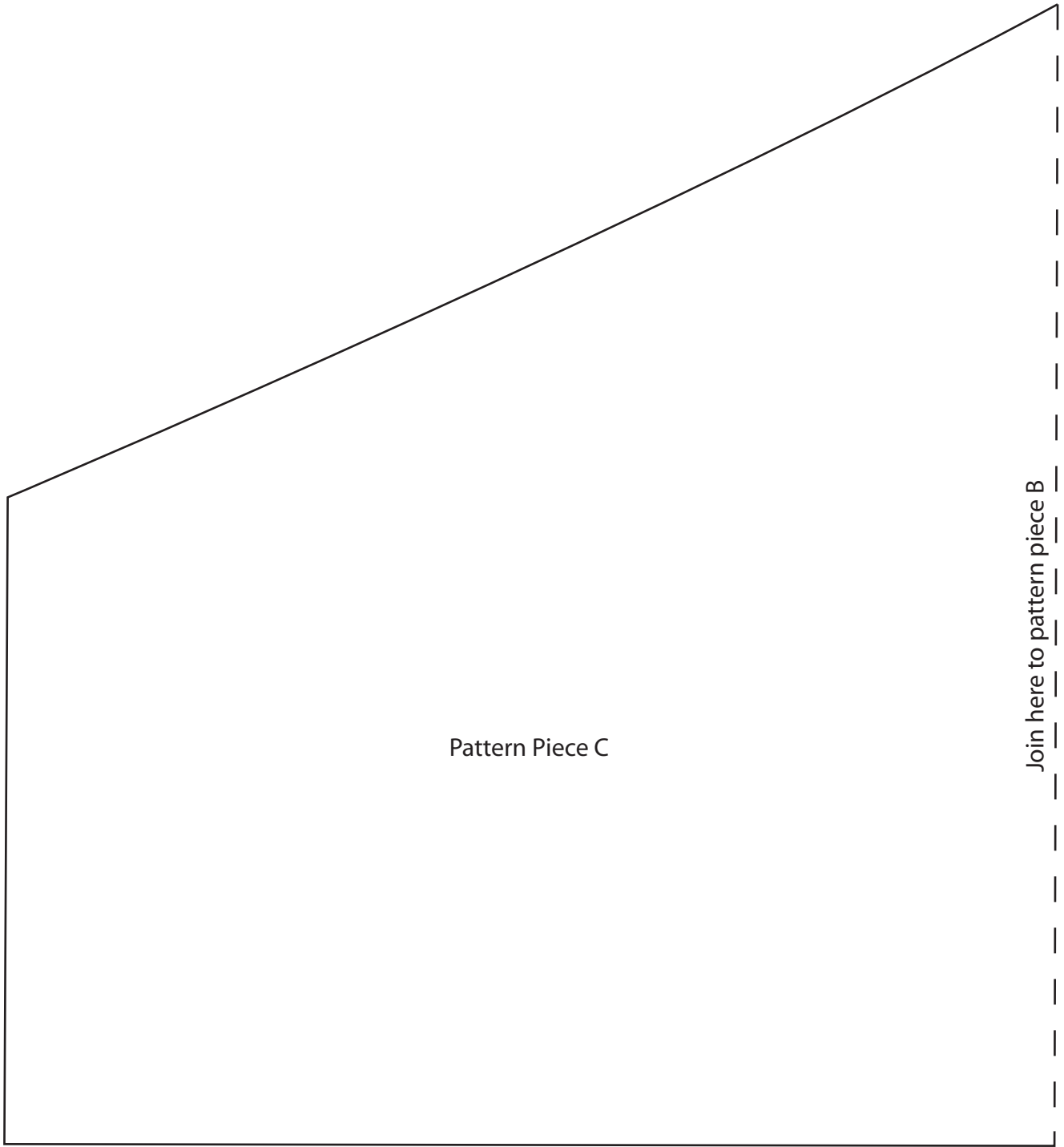


Attach here to Pattern Piece A

Attach here to Pattern Piece C

Pattern Piece B





Pattern Piece C

Join here to pattern piece B